



Children and Family Services



Service Orientation

Last year, Family Energizer (Integrated Family Service) and Serene Court (Refuge Centre for Women) recorded a significant surge in their number of cases compared to previous years, largely involving issues pertaining to parenting, marital relationships, family conflicts and domestic violence. This highlighted the urgent need for supporting families, especially low-income ones. To enhance the functioning and resilience of these service users, we will support the needs of different families through a diverse range of activities in addition to our usual casework.



Learn more about our Children and Family Services



Service Highlights

Creating Solutions for Individuals Troubled by Family Relationships

Providing support to families facing challenges

Last year, Family Energizer (Integrated Family Service) processed a total of 1,233 cases, representing an increase of nearly 10% compared to the previous year. The pandemic and societal changes have altered the public's lifestyles and increased family conflicts. Among the cases closely followed up by Family Energizer, 25% were related to parenting issues, 13% involved marital problems, and 16% were associated with emotional issues. These cases required social workers' intervention to assist in alleviating and managing conflicts and emotional distress within the family.

“Walk Together for a Rough Ride” Parents Support Scheme

According to the latest statistics from the newly registered child protection cases, the number of child abuse cases in 2022 has surged by 37% compared to the pre-pandemic period. The Kwun Tong district stood out as the area with the highest number of reported child abuse cases in Hong Kong, highlighting the significance of addressing parent-child relationships as a crucial issue. Since 2021, we have launched the “Together Walking through the Stormy Days - Parents' Learning Platform” to help parents overcome conflicts with their teenage children by taking part in various activities. Last year, we also continued with our “Walk Together for a Rough Ride” Parents Support Scheme, which was built on the theory of existential-humanistic psychology; through parent groups, workshops, movie appreciation sessions, and talks, we strove to walk side-by-side with the parents on their parenting journey. We have served over 500 people via the scheme since its launch. To achieve a long-term improvement in parent-child relationships, dedicated support groups for parents with teenage children were established to maintain a mutual support network and consolidate the positive changes brought about by the scheme.



Learn more about the “Together Walking through the Stormy Days – Parents' Learning Platform”



The “Walk Together for a Rough Ride” Parents Support Scheme supported parents through group activities and workshops so that they knew they did not walk alone.



The Parent Education Corner regularly updates its decoration to share various themes related to child-parenting.



主辦機構
 香港婦女服務中心
 Chinese Family Service Centre

承辦機構
 香港婦女服務中心
 Chinese Family Service Centre

協辦機構
 家庭服務處
 Family Service Centre

地方家庭綜合服務中心
 Local Family Comprehensive Service Centre

Through the “Together Walking through the Stormy Days – Parents' Learning Platform”, we accompanied parents through their challenges and helped them find suitable parenting approaches.



Mothers took advantage of their leisure time to express themselves through art and enjoy some me-time.

Healing for Women and Children Affected by Domestic Violence

The number of cases at Serene Court increased significantly by 35% compared to the previous year. Among these cases, 59% involved various forms of violence, 27% were related to emotional abuse, and 13% involved physical violence. The issue of emotional abuse should not be overlooked. In addition, 85% of the children residing at Serene Court were 12 years old or younger, and these young children may not be able to articulate the impact of witnessing domestic violence on them. Therefore, it is crucial to pay extra attention to their needs. Last year, Serene Court focused on improving physical, mental, and spiritual well-being by offering stress management and sensory experience workshops, such as mindfulness, yoga, Zentangle, dramatic expression, and gardening. These activities allowed 161 abused women and children who had experienced or witnessed domestic violence to become aware of the connections between themselves and their body and mind, thereby fostering inner calmness and joy. By reconnecting with others, these activities also helped enhance the functioning of their family. Moreover, Serene Court improved its dormitory environment in the past year, by adding quiet and healing private spaces that allow women to enjoy a brief respite when they felt exhausted, thereby relieving their stress.



Learn more about Serene Court



The stress management and sensory experience workshops promoted physical, mental and spiritual health, through activities such as mindfulness, yoga and Zentangle.



Serene Court has improved its dormitory environment in the past year and added tranquil and healing private spaces.

Service Users Participate in Embellishing the Centre

Family Energizer mobilised its service users to adorn the centre with ornaments of various styles. With funding support from the Kwun Tong District Office, we decorated the centre doors with a “HOME” theme. A large mural promoting parenting education was also painted in the activity room to convey a harmonious family message through an artistic creation. In addition, we collaborated with the Gucci Change Makers volunteer team to create colourful lantern decorations in the lobby. These works not only gave the centre a renewed appearance after the pandemic, but the process itself meant the service users were fully engaged, thereby strengthening their sense of belonging to the centre.



Learn more about the services offered by Family Energizer



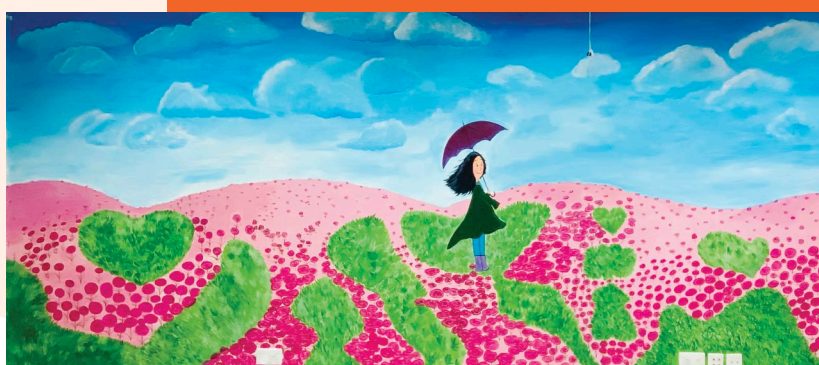
The service users of Family Energizer, together with a volunteer team, embellished the centre with various decorations, conveying positive energy through rich colours.



The centre doors were turned into canvases, with a cute and simple art style that conveys the warm feeling of “Home”.



The volunteer team worked hand-in-hand with the service users to paint lanterns and decorate the centre.



The colourful, large-scale mural has given the activity room a fresh new look, and through this artistic creation, it highlights the importance of harmonious families.

Connecting Information Technology with the Community

With the rapid development of information technology, the Jockey Club SMART Family-Link Project has organised a series of activities to promote the integration of technology with daily life. In one of those activities, the participants and their family members used tablets to create digital drawings and turned them into neon signs, successfully combining an artistic creation with a technological application. In another activity which involved immersive Virtual Reality (VR), the participants and their family members created unique house keys in a 3D space, which proved to be an interesting VR experience. These innovative activities helped bridge the digital gap and promoted interaction and connection among family members. A total of 1,118 people participated in the project.



The VR activity allowed families to participate together and create family-specific keys in a 3D space.



The programme made use of information technology to strengthen parent-child communication while encouraging family members to express care and share their joy.

Outlook

Our Children and Family Services will continue to uphold the value of “Love Your Family” while comprehensively catering to the needs of various families. In the coming year, we will build a network of collaborating partners, strengthen our cross-disciplinary cooperation, and leverage district resources to enhance families’ functioning through a multi-pronged approach. At the same time, we will continue to strengthen our team with professional knowledge and remain well-prepared to address the increasingly complex family problems.



We utilise diverse forms of intervention to enhance and strengthen the functioning and to address the specific needs of different families.

Service Statistics 2022-2023 (as of 31st March 2023)



270

No. of sessions of family harmony programmes

117



No. of sessions of children's development programmes

188



No. of cases receiving domestic violence support



1,233

No. of cases receiving support in family functioning

